



Sorrel Drive, Chippenham
Chippenham, SN14 6XN

STRAKERS

2 Sorrel Drive, Chippenham, Wiltshire, SN14 6XN

A modern, very well presented two double bedroom terraced house with driveway parking for two cars and easily maintainable garden, which is situated on a sought after development on the outskirts of Chippenham.

- Very Well Presented Modern Terraced House
- Two Double Bedrooms
- Cloakroom
- Gas Central Heating & uPVC Double Glazing
- Modern Kitchen & Shower Room
- Driveway Parking For 2 Cars
- Pretty Garden
- Popular Location

£220,000



A modern, very well presented, terraced house with driveway parking for two cars and easily maintainable garden, which is situated on a sought after development on the outskirts of Chippenham.

The property offers accommodation over two floors comprising; entrance hall with cloakroom off, sitting/dining room with French doors opening onto the rear garden, kitchen with modern units, two double bedrooms and a shower room (formerly a bathroom) with white suite.

Externally there is a pretty, paved patio garden with flower beds to the side and path to the rear leading to driveway parking for two cars.

Situation

The highly sought after development of Cepen Park North offers excellent motor commuting to the major centres of Bath, Bristol, Swindon and London via the A4, A420 and the M4. Two of the town's highly reputable senior schools are within easy access together with a Morrisons supermarket. A more comprehensive range of amenities are to be found in the nearby town centre including mainline railway (London-Paddington), college and sports facilities.

Property Information

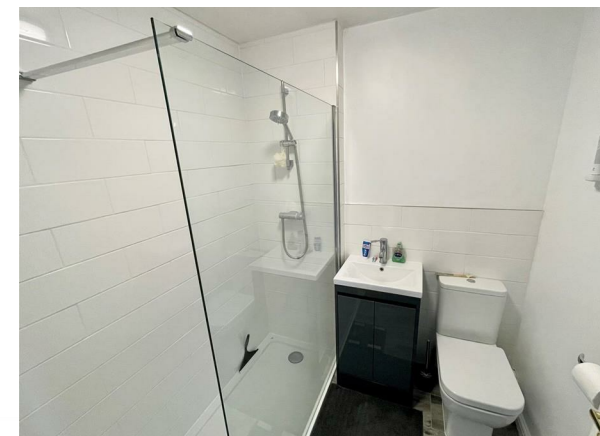
Council Tax Band; C

Freehold

Mains Services

Gas Central Heating

EPC Rating; C



www.strakers.co.uk

Email: chippenham@strakers.co.uk

Tel: 01249 652717

2 Sorrel Drive, Chippenham, Wiltshire, SN14 6XN

